



Shawnigan-Showe'luqun Focus

Volume Fifteen- Issue Two

February 2024 Mim'ne'
"The time of the baby moon, the shortest month"

A Non-Profit Community Publication

Bring Back the Train

Warren Skaalrud

An independent supporter of rail on Vancouver Island.

The Vancouver Island Railway represents unparalleled gains from an environmental perspective and enables active transportation in all its forms should it be restored to operation. There are already over 105km of trails beside the rails in populated areas, and new ones being built like the phase 3 project in Shawnigan Lake that is currently underway.

As a pre-existing right-of-way, the environmental impact of restoring the railway would simply be related to replacing the tracks and ties, removing overgrowth, and some other optimizations that would obviously have some environmental impact as any development does, but that impact would pale in comparison to any other solution to Vancouver Island's transportation problems.



Along the corridor is a single set of highways. Highway 1 runs North and South from Victoria to Courtenay, and highway 4 runs East and West from Parksville to Port Alberni. Those highways are already over capacity, subject to heavy congestion, and susceptible to closures due to collisions, fires, heavy winds and rain, and other causes. Widening them would cause 300km's of sensitive land destruction. Every second that a vehicle idles in congestion, that is a second of extra exhaust fumes put into the atmosphere, not to mention the lost time for the drivers and escalation of the congestion itself caused by the delays. Blockages and slow traffic come with an economic cost for shippers as well. Shipping freight by rail is about 75% more efficient, environmentally,

than by truck. Trucks are a 1 to 1 relationship, whereas trains are 1 to many. The tracks are on a lower grade than highways as well and run wheels that are steel on steel with a contact point the size of a dime for each instead of rubber tires that spread weight out over a much greater surface area depending on their level of inflation. Vehicle tires are an environmental hazard. The particulate released during the process of driving (tread wear) interacts with ozone and creates a chemical compound called 6ppd Quinone that has been proven to kill Coho salmon, Brook trout and Rainbow trout reaching streams and waterways via water runoff, storm drains, catch basins etc. Moving people by passenger train is much more efficient too. Cars have a relationship of 1.5 people to 1, whereas

trains can accommodate expanding ratios of 1 to many, reaching North of 108 passengers to 1 per towed passenger car. Establishing a new highway and the easement those require would need expropriation of large amounts of land from home and business owners, and would impact wildlife habitat, streams, rivers, marshlands, and other sensitive wetlands on the island in a very negative way. We simply cannot afford to pander to the less than 1% that would use the corridor as a trail in its most remote areas, or to those that bought properties knowing and acknowledging the railway was there, and those that cannot appreciate the value of the corridor for moving people and freight on-mass on this beautiful Island that we call home.

I Like Trains, Too

David Slade

Vice-Chair, Friends of Rails to Trails Vancouver Island.

Cobble Hill like almost everyone, I think trains are amazing. They are huge, powerful machines that have played a major role in what we call civilization, moving people, products and resources across continents. Trains are the stuff of legends, and yet remain a significant part of modern society around the world. Setting aside for the moment, the role that railroads played in exploiting foreign labour, exterminating the bison herds and robbing first Nations of their land and sovereignty, there will be a place for trains of all sorts in many places for generations to come. The billion dollar question is: "Is this the time and is the E and N corridor the place to resurrect Vancouver Island's long defunct rail service"? The answer could be yes, but if it is, why has the corridor lay derelict for the past 12 years. If private industry thought

there was a business case for restoring freight or passenger service, surely the investors would have lined up years ago. If the Federal and/or Provincial government thought the corridor was worthy of investment, they should have stepped forward more than 2 years ago when the judge gave the Island Corridor Foundation (ICF) 18 months to come up with a plan to restore Island rail and a way to fund it, or see the First Nations seek reversion of the corridor through reserve lands. This reversion is expected to remove 6 kms of the corridor where it crosses 5 reservations between Victoria and Courtenay. So what is to become of this nearly 300 km long, 100 ft wide corridor that is held as a public trust by the ICF if the return of trains is not immanent? What seems most likely is that infrastructure will continue to rust and rot away until all of the bridges and trestles are condemned and demolished, while other historic land holders may also seek reversion of the land that was taken from

homestead properties for the sake of a train that may never return. Or, is there another possibility? Well, I'm glad you asked! There is a group of volunteers who formed a non-profit society call **Friends of Rails to Trails Vancouver Island**, (FortVI.ca), who have been working for years on putting in place an amazing "Plan B" for the corridor. Our vision is that to the greatest extent possible, the corridor be preserve in perpetuity and transformed into a multi-use trail, acting as a place holder until such times as some level of government or business sees fit to pour the many hundreds of millions of dollars needed into restoring rail service to the Island corridor; which seems most unlikely in the next 20 years. You might wonder who would be served by such a trail? Well, according to the results of a feasibility study we had funded from the \$400 million Federal Active Transportation Fund, many thousands of people would use it every day. Up to almost 1 million, mostly local, user visits per year. Of course, it would not just be local recreational bikers, hikers and walkers; on a world class trail such as we

envision, there would be multitudes of commuters on bikes and e-bikes as well as tourists doing day trips or days long tours, making use of campgrounds, B & Bs, hotels, cafes, restaurants, grocery stores, wine tours, bike shops etc. According to our study, a fully built-out and "mature" trail could pump up to \$95 million into Vancouver Island economies every single year, while supporting hundreds of jobs. Could a trail provide the same services as a modern rail system in regards to moving people and freight? Of course not, but if the section from Langford to Shawnigan lake were 10 feet wide and paved, it could serve as an emergency Malahat bypass route for cars and light trucks, using one-

way, alternating traffic procedures. And if there is no promise of the return of trains in the near future, surely using the railbed as a world class trail would be so much better than letting it continue to decay for another 10 or 20 years. And, if we don't use it for something that can demonstrably serve the public good, we are likely to lose it forever. If you would like to join our efforts in creating a new legacy for this irreplicable and spectacular public asset, please visit our website. Fortvi.ca and consider becoming member and/or making a donation. There is strength in numbers and we are completely funded by members and donations.



Ways to Help... Hearts of the Community Unite!

Kim Barnard
Founder-President &
StoryGatherer

Imagine the feeling of entering a room and being warmly greeted by name. You're the newest member of a friendly group where everyone is really glad you came! That's the enthusiastic "Norm!" at Shawnigan's "Ways to Help... Be a Volunteer" celebration on Saturday, February 10th from 10am-2pm at the SBS Community Table Space in Shawnigan Village, jointly hosted by the Shawnigan Rotary Eco-Club and the Shawnigan Basin Society.

Attendees will get to enjoy refreshments, discover who's who, learn where the needs are, make heartfelt tokens of appreciation, and take inspiration from those who actively

volunteer and those who are curious to know more! We seek to connect with caring members of the community who want to give of their time and talents to make positive change happen. Representatives from our volunteer-driven community groups are especially invited to attend and to share your experiences! We are offering information, inspiration and gratitude for your generosity and example. We believe that dedicated volunteers deserve to be celebrated - and multiplied! At the heart of Rotary service, and through collaborations like this, we see a world where people unite and take action to create lasting change across the globe, in our communities and

in ourselves. It's the work shared that creates that mutually-rewarding bond of connection and belonging. Together with our kind hosts, we invite you to explore the opportunities and benefits of offering your skills and expanding your friendship connections here! Bring your family to the SBS Community Table on Saturday, February 10th from 10am-2pm to make the most of this opportunity. Together let's celebrate the ways of kindness for helping others! We've invited Cory from Lady Finger Gluten Free Bakery to feature her scrumptious treats available. There'll be Door Prizes happening, and Food Bank Donations gratefully accepted! Hearts unite, we are stronger together! www.ShawniganRotaryEcoClub.ca



South Cowichan Library

Monica Finn
South Cowichan Library
250-743-5436
southcowichan@virl.bc.ca
www.facebook.com/VIRLSouthCowichan

Family Storytime is happening! Bring the whole family and join us for stories, songs, and fun. We meet at 10:30am every Monday through March 4, except Family Day (Feb 19). Drop in when you can. For children 0 to 5 and their adults.

Freedom to Read Week is Feb 18-24. Come by to read over an interesting display of books recently challenged in Canada. Find out the objection and the process each went through.

The 2024 Learning with Syeyutsus Speaker Series has started with talks

on Feb 7 & 21 as well as March 6, noon to 1pm. You can register online to watch from work or home or let staff know if you'd like to watch with us in the library!

The Inspired by Reading Book Club meets on Tuesday, Feb 13, 6:30-8pm, to talk about The Sounds of Life: How Digital Technology is Bringing Us Closer to the Worlds of Animals and Plants by Karen Bakker. The book club is run by the Cowichan South Arts Guild; meetings are welcoming and an accepting environment for all.

LEGO® Club happens every Tuesday, 2-5pm. We provide the LEGO (and Duplo) and you supply the imagination. Come ready to build! This is a free, drop-in event.

Tech Help is available most Mondays, Fridays, and Saturdays. Drop-in or make an appointment for one-on-one help with your mobile device or laptop.

Conversational Spanish meets from 6:30 to 7:30pm every Tuesday. Drop in to practice Spanish in a casual setting. Beginners welcome.

Conversational Scottish Gaelic is a fun way for people interested in learning Scottish Gaelic to practice together. Tuesdays, 6:30-8pm.

The South Cowichan Library in the Mill Bay Centre is open:

10am - 8pm, Monday and Tuesday

10am - 5pm, Wednesday, Thursday, Friday, & Saturday

Find out more at virl.bc.ca and at www.facebook.com/VIRLSouthCowichan

What's Shakin' at The Shawnigan Basin Society

Shirley Astleford
Shawnigan Basin Society

Winter Fundraising was a success. These two events have helped us keep the heat on, bills paid and well-equipped volunteers accessible to South Cowichan residents.

The Restaurant at Unsworth Vineyards graciously hosted a gourmet dinner fundraiser for us in November and donated 50% of the proceeds to support the society. Our guests enjoyed fantastic hospitality, food, wine and an exclusive opportunity to bid on treasures donated to our auction. We launched the New Year with our Recreation Raffle Draw. Thank you to all our supporters who participated & Congratulations to the winners!

Salmon in Shawnigan? – Yes, there are!

The Shawnigan Basin Society is seeking volunteers to determine where Coho salmon spawn and develop in the streams that enter Shawnigan Lake. The main streams of interest are Upper Shawnigan Creek, especially in the vicinity of the lake, McGee Creek and West Arm Creek and its tributaries. However, observations of smaller streams would also be much appreciated. Recent reports include Coho fry in the culvert by Wharf park.

If you would like more information and may be interested in volunteering, please email admin@shawniganbasinsociety.org

Additionally, we are participating in The BC Conservation Foundation (BCCF) monitoring program looking to identify what extent a recently identified common tire preservative compound (known as 6PPD-quinone) exists within our local East Coast Vancouver Island waterways.

See our website for volunteer training opportunities and more information about ongoing projects & upcoming events including:

- New T-shirt design sneak peak
- World Wetlands Day is February 2nd - Enter our Family prize draw by completing our new colouring page or submitting a photograph of wetlands in action for our photo contest on Facebook.
- Volunteer Meet & Mingle Feb 10th in conjunction with Shawnigan Rotary EcoClub
- 2024 Membership Drive – Join or Renew now for maximum benefits.

Details are available on our website: www.shawniganbasinsociety.org

CELEBRATING THE HEARTS OF SHAWNIGAN

Ways to Help...
BE A VOLUNTEER!

SATURDAY FEB. 10TH 10AM-2PM

AT THE SHAWNIGAN BASIN SOCIETY'S
COMMUNITY TABLE SPACE
#102 - 1760 SHAWNIGAN LAKE MILL BAY RD.

DOOR PRIZE
DRAWS!

Meet & Greet!
SPECIAL GUESTS,
TREATS & MORE!

DONATE
VOLUNTEER
MEMBERSHIP
BUY YOUR
LOVIN' LAKE LIFE
SHIRTS + BOTTLES

COLLECTING
YOUR
DONATIONS
FOR THE
MILL BAY
FOOD BANK

Shawnigan Lake
Rotary
EcoClub

Shawnigan
Basin Society
shawniganbasinsociety.org

FOR MORE INFO PLEASE CONTACT KIM AT 250-732-0531

VALLEY VINES TO WINES

WineXpert Retailer & Traeger Platinum Dealer

Premium Wine without the Premium Price

Join 1 in 4 of your neighbours saving the liquor tax by making a batch of our variety of WineXpert wines. You pick the wine and we do all the heavy lifting. No experience necessary.

Taste the Wood-fired difference

Pair your wine with some delicious grilled meats on your new Traeger wood-pellet grill. You don't need to be an expert pitmaster to make everything taste great. We have a full selection of grills, accessories, pellets, rubs and sauces.

Come in or call today
250-743-4647

TRAERER WOOD FIRED GRILLS

wineXpert

www.valleyvinestowines.com
2490 Trans Canada Hwy
Mill Bay, BC

Abandoned Log Dump

Robert Amos
Artist & Author

Artist E. J. Hughes dedicated much of his career to painting the waterfront of the Cowichan Valley. At least six watercolours and oils depict scenes along the Mill Bay Road. While I have been able to identify his painting places for most of these, I am not sure where he stopped

to make his drawing for Abandoned Log Dump at Mill Bay, and I hope that readers of *Shawnigan Focus* can help me find it.

The town of Mill Bay grew up in the 1860s when lumber and milling industries were taking place on the bay. But those days were past and the log dump had not been used for some years when Hughes recorded

the scene. It was in September 1967 that, accompanied by his wife Fern, he first drew views along Mill Bay Road from the front seat of his new Pontiac. Soon he was sending *Trees on a Point* (watercolour 1967, oil 1969) and *Young Maples, Mill Bay Road* (oil 1975) to the Dominion Gallery in Montreal. He sketched *Abandoned Log Dump* (1980) in September of 1970.

“My sketches are fewer in quantity but are more compete than sketches produced on former trips,” he wrote to his agent, Max Stern, on September 21 1970. “There is more selection and completeness to each sketch, for I have 2 days instead of one day on each sketch as during former trips. Also, I have an elaborate written colour note on a separate sheet for each sketch, which, strange to say, will simplify things when I enlarge them up into paintings, leaving less to time-consuming conjecture and memory.”

It was ten years later, in November 1980, that Hughes took up his detailed notes and completed the oil painting of Abandoned Log Dump. A few small details have been added, including people on the far shore, but the major feature is constant – an arbutus tree (*A. menziesii*) with orange-sienna

bark and new growth throughout. Prone to dropping its leaves at any time throughout the year, the arbutus is our only native broadleaf evergreen. The arbutus madrona seems to carry a lot of dead wood, both black and white. Its complicated form is a challenge to any artist and Hughes is one of the few who have painted it with the care and dignity it deserves.

Hughes revisited his notes for Abandoned Log Dump and painted it again, this time in

watercolour, in 1994. His last painting of the area was the watercolour *Trees at Mill Bay* (1996). When this was complete, on March 22 1996 Pat Salmon wrote in her diary: “We drove down to Mill Bay and found the exact spot of the watercolour. I took some site photos, and then some people came by and saw the watercolour and one couple came who already knew who Ed was.” Though shy by nature, Hughes always enjoyed a bit of recognition.

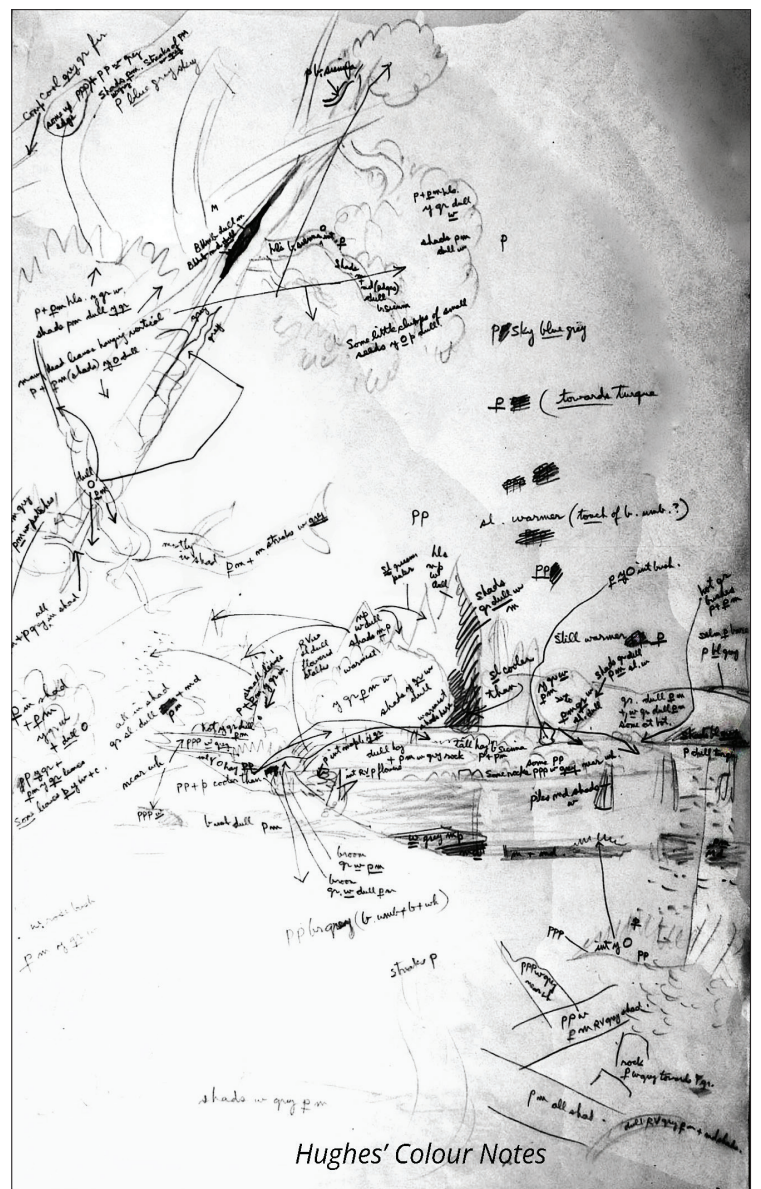


*Abandoned Log Dump at Mill Bay, B.C. (1980).
Oil on canvas, 32" x 25" (81.3 x 63.5 cm).*

"Abandoned Log Dump at Mill Bay." E. J. Hughes. 1980.

This area is about 15 miles south of Duncan B.C., and about 5 miles east of Shawanigan Lake, where we lived for 21 years, my wife and I.

A few years ago huge logging trucks loaded with logs, used to enter the above scene from the foreground, take the first turning to the right in the foreground, ~~and~~ onto a man-made point of rock and gravel ^{at base of} which can be ~~just~~ barely seen in the lower right corner, and unload their logs into the little cove in the middle distance. Now abandoned, it may be in use again soon, by newspaper accounts E.H.



From the Earth

Jennie Stevens
Cowichan South Arts
Guild (CSAG)

The Cowichan South Arts Guild is pleased to present the first show of 2024 in their Spotlight Coffee House Series. **From the Earth** is a Nanaimo-based alternative-folk duo. With uplifting harmonies, catchy ballads, and a wide variety of original and unique cover material, their sound is like Ocie Elliott meets Mumford and Sons. Mike and Michelle deliver relatable lyrics and infectious personalities all with a wholesome island attitude.

From The Earth came to life after the two solo artists decided to merge their

musical endeavours after performing together at several open mics and venues. Each have over a decade of experience in the music industry, Mike and Michelle had gained notable reputations for their solo careers, but as a duo they truly shine, winning hearts all over the island.

The show will be held in the Lounge Room at the Shawnigan Lake Community Centre on Friday March 1, 2024. Doors at 6:30, show at 7:00pm. Tickets can be bought in advance by emailing:
hello@cowichansouthartsguild.com

Members: \$12 advance,
\$14 door, Non-members
\$16 advance, \$18 door.

Mark your calendars!

Friday, March 22nd 7-9pm &
Saturday, March 23rd 1-2pm
The 2nd Annual Art of
Storytelling is a co-production by
the Cowichan South Arts Guild
and Shawnigan Lake Museum.
This was a very successful and
inspirational event last year,
attended by a very appreciative
audience!


Friday night offers presentations from adults and youth. Saturday is oriented for children. If you are interested in participating as a storyteller, for either event, please send your info to Jennie and Lori at hello@cowichansouthartsguild.com before February 29th. A limited number of storytellers will be chosen for each day, but this event will grow over the next few years to create more opportunities.

You don't want to miss this event!

*Cowichan South Arts Guild
& Shawnigan Lake Museum*





collaborate to present

The Art of Storytelling '24



Friday, March 22nd * 7 - 9pm
An intimate evening of Oral Storytelling (focus - adults & older youth) +
Saturday, March 23rd * 1 - 3pm
Stories & Music (focus - families & children under 12)

Shawnigan Lake Community Centre - Lounge
to reserve a seat **contact: Jennie & Lori * hello@cowichansouthartsguild.com**
by donation



Watersheds in the Winter

Marcy Fenske
Shawnigan Basin Society

We all live in a watershed. There are 18 watersheds in the Cowichan Valley Regional District. 15 of them flow east. A watershed is essentially a geographic boundary of precipitation capture and water flow from high ground to low to common points of collection and eventual outflow. The Shawnigan Creek Watershed, in the Shawnigan Basin outflow from Shawnigan Lake, drains to the Saanich Inlet. Imagine the basin as a geographic bowl.

In temperate regions like Vancouver Island, winter is the most active time for watersheds. Rains revive parched land and networks of draining tributary flow swell streams and rivers. Watersheds in winter are a beautiful and dramatic connection of forests, land, creeks, ponds, rivers, lakes, estuaries and marine ecosystems in an aquatic force.

Winter is the most important time for replenishing surface water containments as well as aquifer recharging (refilling). We draw water from creeks, rivers and lakes, and deeper confined bedrock and unconfined surficial aquifers are what we tap with wells. Confined bedrock aquifers can reach the surface and be significantly recharged in upper elevations as well as through aquitard fractures in overlaying surficial aquifers. Unconfined surficial aquifers are recharged by surface water. Aquifer recharging is greatly aided by mature forest and native vegetation that slows surface water flow, allowing percolation.

Years with low annual rainfall, increasing temperatures, population growth and licensed water draws greatly impacts water supplies. Logging/deforestation, housing developments and constructed roadways disrupt natural watershed systems and inhibits absorption, reducing

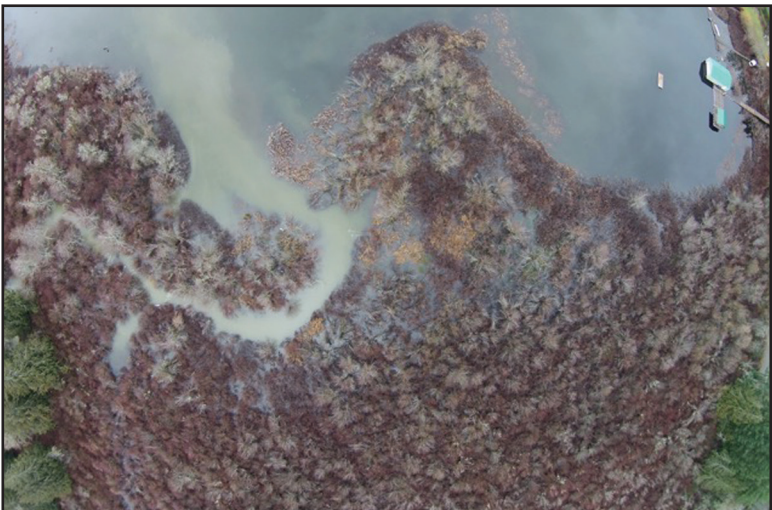
aquifer recharge. This all lends to the drought conditions and water restrictions we now face annually.

Surface contaminants are also most readily flushed into watercourses during winter months. Oil/fuel/chemicals on roadways, fertilizers/pesticides, debris/silt from contaminated soil deposit sites/open excavation sites with insufficient containment, failing septic systems, garbage, agricultural sources of groundwater contamination... everything exposed is flushed with water and gravity introduces all of these contaminants into water systems with potential to contaminate our drinking water and negatively impact numerous ecosystems. We are experiencing increased intensity of winter rain events exacerbating contaminant introduction through rushing volumes of water and reduction of filtrating forests and vegetation.

The accompanying photo is an example of a sediment plume, where excessive amounts of sediment are observed entering Shawnigan Lake with significant impacts to water quality. Included in this is unnatural nutrient feeds (septic systems/fertilizers) that result in toxic summer algae blooms and growth of invasive Eurasian Water-milfoil.

We can all be watershed stewards. We can reduce contaminants and increase foreshore vegetation on our properties, pick up

garbage, advocate for the protection of natural spaces, watch for harmful human activities and report problems we observe. The Shawnigan Basin Society monitors waterways and industrial/development activities, reports issues when necessary and relays significant concerns to the CVRD or provincial/federal governing bodies. There is continued focus on protecting watersheds and natural habitats for all of the life that lives within them, including us. After all, this is our habitat, too!



Aerial shot of sediment entering the south end of Shawnigan Lake after a storm



St. John's Academy Spotlight
Shawnigan Lake



Visit our website for additional information:
www.stjohnsacademy.ca

Back to School

We hope that everyone had a peaceful and safe holiday season. Here at St. John's Academy, we're well into Term 2.

Mark Your Calendars

Term 2 November 27 to March 8

Term 3 March 25 to June 21

Spring Break March 9 to March 24

Mary Poppins Music Theatre
Performance April 19 & 20

Fun Fair May 25

Last day of school June 21

SJA Football Academy Update

The Football Academy Fall 2024 lineup is expanding to include girls. Did you know that we regularly host an on campus Football Academy tour and "meet-and-greet" with our academy leaders? We invite you to join.

To reserve your spot, please contact:

Jenny Boomer
Director of Local Admissions & Marketing
Ph. (250) 220-4888
jenny.boomer@stjohnsacademy.ca
www.stjohnsacademy.ca



International Baccalaureate Diploma at St. John's Academy Shawnigan Lake

As one of a few authorized International Baccalaureate Diploma Programme (IBDP) schools on Vancouver Island, St. John's Academy Shawnigan Lake (SJASL), is looking forward to seeing the first students graduate from the program in June 2024. SJASL currently has 20 students enrolled in the program. We're excited to see where their education will take them after graduation.

What is IBDP?

The International Baccalaureate Diploma is a programme that is academically challenging. The final examinations are designed to prepare students for university and working life. Students choose subjects from six core groups – including language acquisition, sciences, individuals and societies, the arts, studies in language and literature, and mathematics. Those are combined with Theory of Knowledge, Creativity, Action and Service class and the Extended Essay to complete the Diploma Programme Certificate.

What is the benefit of an IBDP education?

The IBDP builds confidence and upon completion graduates are literate, articulate, and have an understanding of global issues and other cultures. For those students wishing to go onto post-secondary education, admissions and scholarship committees are known to take into account an applicant's entire school record, not just marks.

Where can I learn more about the IBDP?

In depth information can be found online at www.ibo.org or by calling the school and asking to speak with Jenny Boomer.



Shawnigan Weather - January 2024

Stats courtesy of UVic Weather Network and Weather Underground
Reported by Grant Treloar



	January Normal	Cigarmaker's Bay		Butler Road		Discovery School		Museum		Shawnigan Average	
		2024	2023	2024	2023	2024	2023	2024	2023	2024	2023
Average High	6.3	4.7	6.3	5.0	6.8	5.9	7.2	5.9	7.2	5.4	6.9
Average Low	0.5	0.4	2.0	-0.7	1.1	0.4	1.9	0.9	2.2	0.3	1.8
Extreme High	15.0	12.9	10.5	13.6	11.3	13.4	11.5	13.5	11.3	13.4	11.2
Extreme Low	-21.1	-11.3	-5.9	-12.9	-7.5	-12.8	-6.6	-11.2	-5.2	-12.1	-6.3
Precipitation	215.3	294.7	143.7	248.2	130.4	237.1	109.8	236.9	104.8	254.2	122.2
Days w precip	20	24	24	22	27	25	25	23	24	23.5	25
Year Precip	215.3	294.7	143.7	248.2	130.4	237.1	109.8	236.9	104.8	254.2	122.2
Precip since Oct 1	534.7	971.0	676.3	881.7	633.5	870.6	516.4	748.0	511.1	867.8	584.3

Rank since 1914: 47th warmest, 30th wettest

Jan 7	Jan 14	Jan 21	Jan 28
5°	3°	2°	5°
4cm	+31cm	-15cm	+50cm
116.49m	116.79m	116.64m	117.13m

Lake Temperature
Lake level change
Surface Elevation

January 2024 was a month of extremes. From January 1-9, the mild December weather, with rain here and there, continued. Starting January 10th, there was an abrupt freeze with temperatures falling to minus double digits — the coldest in this area since December 2008. Cold temperatures peaked on the 13th with -11 to -12 degrees. Also plunked in there was snow on the 11th, 17th/18th. Cool, slightly above freezing temperatures then continued for the next week. Then on the 23rd, foggy, wet, warm (for January) weather took hold with some near record highs, peaking on the 29th at 12-13°. In the end, the month was slightly cooler and wetter than normal.



Shawnigan Focus Team

Co-Editors:
Lori Treloar
Kim Hennecker

Advertising and
Accounting:
Kim Hennecker

Layout:
Grant Treloar

Box 331
Shawnigan Lake BC
V0R 2W0
250-743-8675
shawniganfocuseditor@gmail.com
shawniganfocusads@gmail.com

Now is a great time to look into a heat pump!

Call us to find out how a heat pump could save you money!

QUALIFY FOR UP TO

\$11,000*

IN REBATES &

0% FINANCING

WHEN YOU INSTALL
A NEW HEAT PUMP

*Subject to terms & availability

Authorized Dealer of:

**MITSUBISHI
ELECTRIC**

Heating and Cooling



to find out more, call us at:
250 748 0170
www.mercuryrefrigeration.ca

Mercury Refrigeration

HEAT PUMP SPECIALISTS

BASED IN SHAWNIGAN LAKE SINCE 2007 • SERVING AND EMPLOYING THE COMMUNITY • AT #15-102 700 SHAWNIGAN LAKE ROAD

Shawnigan Lake Museum

Lori Treloar
Executive Director
museum@shawniganlakemuseum.com

Is the Shawnigan Lake Museum important to the community? Our feedback says yes! The Society was incorporated in 1977 and moved into the original Firehall in 1983. That makes it one of the longest, continuing entities in the Village. You may not have visited yet, but you might be surprised if you do... the building looks small (for now) but Shawnigan's story is big...and it's about to get bigger.

Recent reviews:
"An absolute delight to visit – so much to see and looking forward to come back to see the expansion" ~ Savona, BC

"Amazing, thank you so much for sharing some interesting history with us!!"
~ Cowichan Take a Hike Program

The expansion is progressing...the roof is almost done! The exterior and interior colours have been chosen and things are moving forward, inside and out. We are working on new exhibits, re-working some of the existing space and planning programming for after the re-opening. As the building will be considerably larger, we will be hosting volunteer recruitment sessions in late

spring. We encourage you to consider attending to see how you can get involved.

As in every project, we have experienced some surprises that have added to the overall cost of the project. Therefore, we continue to raise funds for the building costs. You can help the project with a one-time donation to the museum (we accept payment by cheque, debit, Mastercard/ Visa or cash, and we can write donation receipts), or through Canada Helps where you can do a one-time donation or set up a monthly donation, of any amount, online through Canada Helps.

More ways that you can help...

Become a member. A strong membership is very important when we write grants as it shows strong support for what we are doing.

Become a volunteer. We have a variety of opportunities: Help with community programming and school group visits; giving museum tours (training provided); research for stories and exhibits; light maintenance; tending the garden; gift shop sales and inventory and more...

We appreciate your support, and we hope you want to be part of this exciting new era for the museum!



Back of Building



Interior



Front of Building



New Entrance

Shawnigan Lake Fire Department

Phone: (250)743-2096 Non-emergency: (250) 812-8030 shawniganfire@shaw.ca

December 2023 Report

Department Members Attended 34 Incidents in January

- Monday, Jan 1 - 1st Responder off Renfrew Rd
- Monday, Jan 1 – Rescue on Briarwood Dr
- Tuesday, Jan 2 – Hazmat on Cameron-Taggart Rd
- Wednesday, Jan 3 - 1st Responder off Wallbank Rd
- Wednesday, Jan 3 - 1st Responder off Renfrew Rd
- Friday, Jan 5 – MVI on Shawnigan Lake Rd
- Saturday, Jan 6 - 1st Responder off West Shawnigan Lake Rd
- Monday, Jan 8 – MVI on S Shawnigan Lake Rd
- Monday, Jan 8 – MVI on S Shawnigan Lake Rd
- Tuesday, Jan 9 – Vehicle Fire on Evergreen Ln
- Tuesday, Jan 9 – MVI on Lovers Lane
- Tuesday, Jan 9 - 1st Responder off Shawnigan Lake Rd
- Tuesday, Jan 9 - 1st Responder off Filgate Rd
- Wednesday, Jan 10 - 1st Responder off Gregory Rd
- Monday, Jan 15 - 1st Responder off W Shawnigan Lake Rd
- Monday, Jan 15 - 1st Responder off W Shawnigan Lake Rd
- Tuesday, Jan 16 – Chimney Fire on Airbright Ln
- Wednesday, Jan 17 - 1st Responder off Shawnigan Lake Rd
- Thursday, Jan 18 - 1st Responder off Cameron-Taggart Rd
- Thursday, Jan 18 - 1st Responder off Linden Ln
- Thursday, Jan 18 – Hydro Lines on W Shawnigan Lake Rd
- Friday, Jan 19 – Hydro Lines on Renfrew Rd
- Saturday, Jan 20 - 1st Responder off Renfrew Rd
- Sunday, Jan 21 – Alarms Activated on Renfrew Rd
- Sunday, Jan 21 - 1st Responder off Renfrew Rd
- Monday, Jan 22 – Structure Fire on Shawnigan Lake Rd
- Tuesday, Jan 23 - 1st Responder off Briarwood Rd
- Tuesday, Jan 23 - 1st Responder off Wilmot Ave
- Wednesday, Jan 24 - 1st Responder off S Shawnigan Lake Rd
- Friday, Jan 26 - 1st Responder off Elford Rd
- Saturday, Jan 27 - 1st Responder off Meadowview Rd
- Saturday, Jan 27 - 1st Responder off Renfrew Rd
- Sunday, Jan 28 – MVI on Renfrew Rd
- Monday, Jan 29 - 1st Responder off Gregory Rd

Sonia Furstenau
MLA for Cowichan Valley

Sonia.Furstenau.MLA@leg.bc.ca
(250) 715-2792
P.O. Box 509 Duncan, BC
V9L 3X8

LEGISLATIVE ASSEMBLY
OF BRITISH COLUMBIA





It's true, with us, mechanical problems melt away.



Maintenance Offer **Book an appointment now**



Full-Service Co-op Partner
Serving Regular,
Premium & Diesel Fuels

SHAWNIGAN GARAGE
250-743-2122
(at the 4-WAY STOP in SHAWNIGAN VILLAGE)

shawnigangarage.com

Approved BCAA & Government Auto & Marine Inspection, Repair & Maintenance Facility

ICE MELTER
44 LB BAGS
\$30 / BAG
(taxes included)
ENVIRONMENTALLY FRIENDLY!



COMMUNITY GROUPS

- CVRD Director for Shawnigan Lake Area B**
Sierra.Acton@cprd.bc.ca
- Area B Parks Advisory and Area B Advisory Planning Commission**
https://www.cprd.ca/list.aspx# (sign up for meeting notifications)
- CVRD Public Input to the whole Board**
LegislativeServices@cprd.bc.ca
- Shawnigan Improvement District**
2nd Monday of each month 7 pm at #1 Fire Hall
- Shawnigan Lake Museum**
Contact us for information about hours and/or group visits.
Contact: *museum@shawniganlakemuseum.com* (web): *shawniganlakemuseum.com*
- Shawnigan Residents Association (SRA)**
For info: (web): *www.thesra.ca*
- Shawnigan Lake Community Association (SLCA)**
Contact: *bburr@shaw.ca*
- Shawnigan Basin Society**
#102-1760 Shawnigan Mill Bay Road. Contact: *info@shawniganbasinsociety.org*
- Young Seniors Action Group (YSAGS)**
Contact: *ysagssl@gmail.com* (web): *blog.ysag.ca*
- South Cowichan Community Policing (SCCP)**
Contact: 250-929-7222(web): *southcowichancommunitypolicing.ca*
- Royal Canadian Legion Malahat District Branch 134**
Saturday Meat Draw 3:00-5:00pm. Contact: *rc134@shaw.ca* 250-643-4621
- Cowichan South Arts Guild (CSAG)**
Contact: *hello@cowichansouthartsguild.com* (web): *cowichansouthartsguild.com*
- Shawnigan Quilters** - Wed. 9-2 at Lion's Hall (former Sylvania School)
- Rotary Club of Shawnigan Lake Eco Club**
Meeting Info & Contact: *ShawniganRotaryEcoClub.ca*
- Malahat Lions Club**
Contact: 250-743-0569

Classified

FOR SALE MISC

SHAWNIGAN FOCUS CLASSIFIED are your classifieds of choice. Your message delivered to every address in the Shawnigan Lake area. \$13.50 for the first 30 words 35¢ per additional word *shawniganfocusads@gmail.com* Telephone : 250-743-2197

GENERAL INTEREST

JOB OPPORTUNITIES

RENTALS

CHILDCARE

AUTOMOTIVE

LOST - FOUND

HOME SERVICES

PROPERTY SERVICES

ANNOUNCEMENTS

WANTED

Cheap Ad Rates!!

Contact Kim:
shawniganfocusads@gmail.com

What Is It? Where Is It? Why Is It?



One lucky respondent with the correct answer will be randomly selected to win two Specialty Coffees.

Thanks to Shawnigan House Coffee for their support!

Congratulations to Brian Swan who was chosen from the group with correct answers to last month's photo of the Fire Hydrant at Elford & Ernest.

ARE YOU INTERESTED IN SERVING YOUR COMMUNITY?



Volunteers Needed
MALAHAT LIONS
Welcoming New Members

Volunteering makes you feel GOOD!

Join us on the 1ST & 3RD Thursday of every month.
Meetings held @ the Malahat Legion

LOOKING FOR MORE INFORMATION? PLEASE CONTACT :
(250) 743-0569



Mason's Store

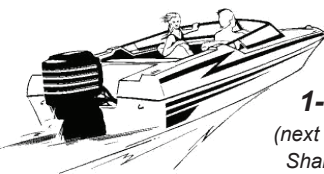
A PART OF SHAWNIGAN LAKE FOR 65 YEARS
YOUR LOCAL STORE

Our Famous Instore Bakery – Sandwiches & Subs
Lottery – Greeting Cards – Balloons
Fax – Propane Swap – Rug Doctor – Dew Worms
1855 Renfrew Road
Ph: 250 743 2144 Fax: 250 743 7883

SHAWNIGAN MILL BAY
AUTO PARTS (1992) LTD.
250-743-3355



South Cowichan's Auto & Marine Parts Supplier



NOW LOCATED @
1-3740 Trans-Canada Highway
(next door to RONA on the same frontage road)
Sharing a building with Accent Screen Printing

Shawnigan Cemetery



EST 1965
"A Community Resting Place"
Information 250 929 6100

Maintained by
MALAHAT LIONS



MATTHUW
RONALD-JONES REALTY

PEMBERTON
HOLMES
ESTABLISHED 1887

250-732-5232
mronaldjones@gmail.com
www.mrjrealty.ca

Did you know?
we offer
COUPLES
MEMBERSHIP PACKAGES



GET FIT
TOGETHER

12 Month
Couples Membership
\$89.95
Per Month

Membership packages include: access to cardio equipment, selectorized and plate loaded strength equipment, functional training equipment and free weights; group fitness classes (Yoga, Zumba, Cycle Fit and more!); Infrared Sauna, and Towel Service!

VALLEY
HEALTH and FITNESS

Call (250) 743-0511
www.valleyhealthandfitness.ca
#1-1400 Cowichan Bay Road, Cobble Hill

GIFT
CERTIFICATES
AVAIL.

HAVE
FUN

OPEN HOUSE

MARCH 8 & 9, 2024



Join us to hear about an exciting new project proposal for the Shawnigan Lake community.

After 40 years of supporting local children, youth, and adults living with disabilities, Easter Seals British Columbia/ Yukon is going to rebuild Camp Shawnigan. The new Camp Shawnigan represents a bold new vision that will meet the escalating needs for inclusive and accessible spaces for our clients, while also filling the unmet needs for recreational facilities across the region.

We are dedicated to ensuring the redevelopment of Camp Shawnigan creates an inclusive community recreation hub for everyone, and we invite you to join us for some two-way dialogue.

You'll have the opportunity to:

- Learn more about the vision and proposed project
- Ask questions and provide feedback
- Understand the benefits to the community and the region
- Meet the staff and community members behind the project

EVENT DETAILS

Shawnigan Lake Community Centre
2804 Shawnigan Lake Rd
Friday, March 8, 4 PM–7 PM
Saturday, March 9, 10 AM–3 PM

